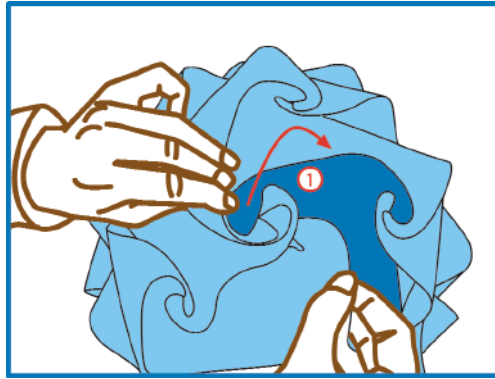


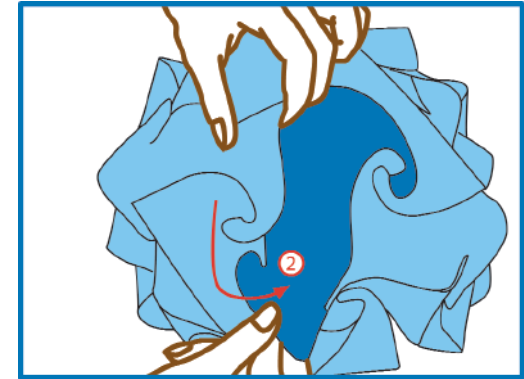
Select the panel that is on the opposite side from the power cable. Remove the edges of the selected panel the advised sequence.

Step 1



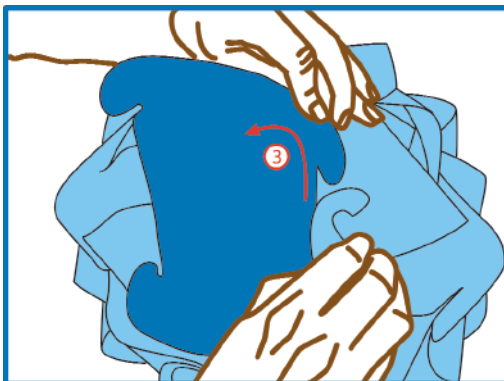
At the first „rosette of five“ grab with the left hand four of the five petals. Grab the panel to remove with your right hand and gently pull it out of the rosette.

Step 2



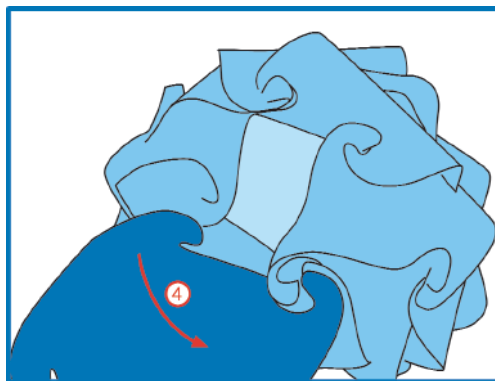
At the „rosette of three“ grab two of the three petals. Pull gently the edge of the panel you want to remove out of the rosette.

Step 3



Now remove the third edge as described in step 2.

Step 4



Finally remove the fourth edge as described in step 1.

The lamp will remain stable with up to four panels removed. In order to unscrew the bulb safely please grip tightly the cord outside the lamp.

Now the bulb should easily be able to change. Please ensure to install the heat protection properly before screwing in the new bulb.

Please use maximum of 60 watt bulb. Re-install the removed elements following the instructions backwards (step 4 -> step 1)